

Solving the Mystery



What do you know?

What do you see, feel, smell, and hear?

What do you think?

Based on what you know, what can you infer about the documents? What do you think they are?

What do you wonder?

What questions do you have about these documents? What do you want to know?

Vocabulary Words

Write down any vocabulary words that you do not know.

What do you hear?

Supplemental Materials Pg. 3—What do you hear?

1

Dynamics

Station#1
Piano or Mezzo-Piano:
The music that you hear is soft or medium soft.

Station#3
Forte or Mezzo-Forte:
The music that you hear is loud or medium loud.

Station#2
I don't know:
You are unsure about what dynamic the song is.

Supplemental Materials Pg. 3—What do you hear?

2

Tempo

Station#1
Allegro or Moderato:
The music that you hear is fast or moderately fast.

Station#3
Largo:
The music that you hear is slow.

Station#2
I don't know:
You are unsure about what tempo the song is.

Supplemental Materials Pg. 3—What do you hear?

3

Style

Station#1
Ballad:
The music that you hear is a legato, romantic song.

Station#3
March:
The music that you hear sounds like it would be played in a marching tempo (you may see a marching band playing it).

Station#2
I don't know:
I am unsure about what style the song is.

Supplemental Materials Pg. 3—What do you hear?

4

Time Signature

Station#1
2/4 or 4/4:
The music that you hear has a duple pulse (either 2 beats or 4 beats in a measure).

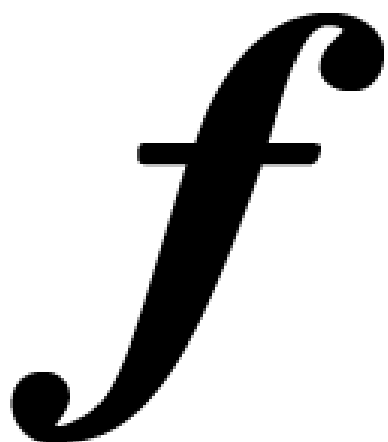
Station#3
3/8, 6/8, or 9/8:
The music that you hear has a triple pulse (either 1, 2, or 3 beats per measure with a compound division per beat).

Station#2
I don't know:
I am unsure about what time signature the songs is.

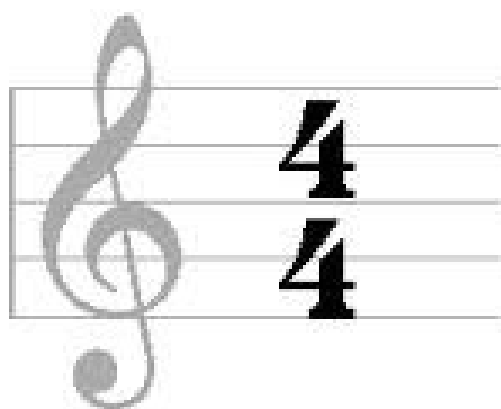
Supplemental Materials Pg. 3—What do you hear?

5

(forte)



(time signature)



Compare & Contrast

Directions: In the charts below, compare and contrast the elements of our school song to a song that you either heard or observed in a previous lesson. Pay attention to vocabulary, instrumentation, dynamics, tempo, style, etc. A list in each box is acceptable.

What elements are the same or similar?

What elements are different?